

Research Article

Benthic survey of natural and artificial reefs off Mar del Plata, Argentina, southwestern Atlantic

Gabriel Genzano^{1,2}, Diego Giberto^{2,3} & Claudia Bremec^{2,3}

¹Estación Costera Nágera, Departamento de Ciencias Marinas, Facultad de Ciencias Exactas y Naturales
Universidad Nacional de Mar del Plata, Funes 3350, Mar del Plata, Argentina

²Instituto de Investigaciones Marinas y Costeras (IIM y C), Universidad Nacional de Mar del Plata
Consejo Nacional de Investigaciones Científicas y Técnicas, Argentina

³Proyecto Ecología Pesquera, Laboratorio de Bentos, Instituto Nacional de Investigación y Desarrollo
Pesquero (INIDEP), Paseo V.O. N°1, Mar del Plata, Argentina

ABSTRACT. This study describes the macrofaunal assemblages of subtidal rocky reefs off Mar del Plata in order to compare the macro invertebrate assemblages settled on shipwrecks with those of nearby reef sand to characterize the fish fauna associated with natural (NR) and artificial (AR) reefs. Topographic characterizations and surveys of invertebrates and fishes were performed in November and December 2005, using SCUBA diving. A non-parametric multivariate analysis was used to analyze the environmental and biological data. The reefs were mainly distinguished by their depth and the position of the substrate. The red calcareous algae, *Corallina officinalis*, dominated the shallowest NR, whereas conspicuous mytilid assemblages of *Mytilus platensis* were present at depths over 3 m, sea anemones, *Anthothoe chilensis*, were more abundant between 6 and 10 m, and the soft coral, *Tripalea clavaria*, was found at nearly 20 m depth. No differences were found between horizontal ARs and the adjacent NRs. The greatest differences were found between the communities of vertical and horizontal substrates, both in NRs and ARs. Fifteen fish species were recorded in the analyzed area. Species having strong site fidelity, e.g., *Acanthistius brasiliensis* and *Pseudoperca semifasciata*, were clearly more abundant and/or frequent in ARs (shipwrecks) than in NRs. This pioneer study in the surveyed area showed that reef allow the settlement of diverse benthic assemblages. ARs also provide refuge for fishes. As sport fishing and diving are activities being carried out in Mar del Plata, where tourism is one of the main economic resources, the protection of such areas should be considered in conservation plans.

Keywords: natural and artificial reefs, benthic communities, Mar del Plata, southwestern Atlantic.

Estudios del bentos de arrecifes naturales y artificiales de Mar del Plata, Argentina, Atlántico sudoccidental

RESUMEN. Se describió la macrofauna de los arrecifes rocosos sublitorales, frente a Mar del Plata, para comparar las asociaciones de macro-invertebrados de los pecios con las de los arrecifes aledaños y caracterizar la fauna de peces tanto en los arrecifes naturales (NR) como artificiales (AR). Las caracterizaciones topográficas y los censos de invertebrados y peces se realizaron mediante buceo autónomo en noviembre y diciembre de 2005. Los datos ambientales y biológicos fueron analizados mediante análisis multivariados no paramétricos. Los arrecifes fueron principalmente discriminados acorde a su profundidad y posición del sustrato. El alga roja calcárea *Corallina officinalis* fue dominante en los NR poco profundos, mientras que conspicuas asociaciones del mitilido *Mytilus platensis* se encontraron a más de 3 m de profundidad; la anémona de mar *Anthothoe chilensis* fue más abundante a los 6-10 m y el coral blando *Tripalea clavaria* cerca de los 20 m de profundidad. No se evidenciaron diferencias entre los ARs de disposición horizontal y los NR aledaños. Las mayores diferencias fueron halladas en las comunidades de los sustratos verticales vs horizontales tanto en NRs y ARs. Se registraron 15 especies de peces. Aquellas con fuerte fidelidad por el habitat, e.g. *Acanthistius brasiliensis* y *Pseudoperca semifasciata*, fueron claramente más abundantes y/o frecuentes en los ARs (pecios) en comparación con los NRs. Este estudio pionero en el área mostró que los arrecifes permiten la fijación de diversas asociaciones bentónicas. Los ARs aportan además refugio para los peces. Debido a que la pesca recreacional y el buceo son actividades que se están desarrollando en Mar del

Plata, donde el turismo es uno de los principales recursos económicos, la protección de estas áreas debería considerarse en los planes de conservación.

Palabras clave: arrecifes naturales y artificiales, comunidades bentónicas, Mar del Plata, Atlántico sudoccidental.

Corresponding author: Gabriel Genzano (genzano@mdp.edu.ar)

INTRODUCTION

During the past years, the fishing effort has increased and coastal resources had been more heavily impacted due to trawling in Buenos Aires (Bertolotti *et al.*, 2001, 2008). Bottom-trawl fisheries disturb benthic communities and habitats and can reduce biomass, production and diversity, which at the end may change ecosystem properties (Collie *et al.*, 2000; Kaiser *et al.*, 2000; Hiddink *et al.*, 2006a, 2006b). Within this context, natural reefs (NR), a strip or ridge of rocks or coral that rises to or near the surface of the water, provide refuge to coastal fishes and habitat to numerous invertebrates and algae as they cannot be disturbed by demersal fishing activities. Accordingly, artificial reefs (AR) have been suggested as a tool for the conservation of biodiversity, mitigation and rehabilitation of habitats under anthropogenic impacts (Perkol-Finkel & Benayahu, 2005, 2007; Perkol-Finkel *et al.*, 2006).

An artificial reef is one or more objects of natural or human origin deployed purposefully on the seafloor to influence physical, biological, or socio-economic processes related to living marine resources (Seaman, 2000). Accidental shipwrecks have been also classified at times as AR. This definition reflects hypotheses that the ecological processes of artificial reefs are (or should be) functionally equivalent to those of natural benthic systems in an area (Seaman, 2000). If the last is true, after a long term period of submersion we could expect that ARs and NRs will have a similar community structure (Perkol-Finkel *et al.*, 2006). On the contrary, if the AR is not mimicking the NR in a proper way, the resulting benthic communities should differ (Glasby & Connel, 2001).

The use of AR to mitigate the effects of human activities has been stressed out by fisheries managers and conservation biologists. However, there is still a debate regarding their performance in attracting fish resources from the surroundings and depleting them or enhancing production in the whole area, otherwise lost (Carr & Hixon, 1997; Grossman *et al.*, 1997; Svane & Petersen, 2001). In the case of epibenthic organisms, the introduction of an artificial habitat clearly increases the local production of fouling assemblages;

its structural complexity and submersion period affect the colonizing community (Baine, 2001; Svane & Petersen 2001; Perkol-Finkel *et al.*, 2006).

Mar del Plata coastal area is characterized by numerous rocky outcrops that extend from the intertidal to several miles seawards, up to 25 m depth. The outcrops and surrounding areas are subjected to many human activities, including commercial and recreational fisheries and diving. In addition, some shipwrecks have built extended AR during the past decades, which provide hard substrata suitable for the recruitment of benthic and refuge for fish species. The fauna and habitats remain largely unknown in the study area; only some cnidarian groups were surveyed (Genzano *et al.*, 2002; Excoffon *et al.*, 2004). On the other hand, diving at Mar del Plata outcrops is a more recent focus for the diving centers of the region, who have proposed the creation of submarine parks to boost diving activities in these almost unknown marine communities.

In this paper we study the benthic communities of coastal outcrops off Mar del Plata (both natural and artificial reefs). The main goals are 1) to describe for the first time the macrofaunal assemblages of subtidal hard bottoms, 2) to compare the macrobenthic assemblages settled on shipwrecks with nearby outcrops to determine the effectiveness in reflecting the natural communities of the region, after a long-term period of submersion (60 years), 3) to characterize the fish fauna associated with NRs and ARs, and 4) to obtain reliable information to management and conservation of these coastal habitats.

Buenos Aires coast comprises sandy beaches and numerous isolated intertidal hard bottoms of *loess* (consolidated sedimentary rocks, Pleistocene). The coast off Mar del Plata city is exceptionally different due to the presence of quartzite rocks originated in the Tandilia mountainous system (SE of Buenos Aires Province), during the Ordovician, which extends several miles seawards up to 25 m depth (Genzano, 2010). The sublittoral rocky area is estimated at *ca.* 14 km² and constitutes the largest hard substrate in the zone. Although the area is indicated as continuous in the nautical charts, it is actually a group of isolate

outcrops of variable size surrounded by sand and shell debris and with different physiognomy and faunal composition. The outcrops are well-known to divers and fishermen, which commonly named them Restingas (outcrops up to 12-14 m depth) and Bancos (outcrops 18-23 m depth) (Fig. 1). These outcrops are conformed by big fragmented quartzite boulders, with the exception of a sedimentary slope originated during the Quaternary period (Neozoic era) which is located over the orthoquartzitic rocky floor in Banco de Afuera. This slope is 1-1.5 m height conformed by a more fragile consolidated sedimentary rock (coquina with abundant shell fragments).

The area is affected by a littoral current (south to north), semi-diurnal tidal currents and high-energy waves; storms and winds from SE are frequent, mainly in autumn and winter (Lanfredi *et al.*, 1992). During this period big amounts of sand and fragments of mollusk valves accumulate in depressed areas and crevices. Storms and winds notably produce sediment re-suspension. Consequently, diving is usually developed under dangerous conditions, with water visibility ranging between 0.5-6 m, average 3 m. Water temperature is variable through the year, maximum summer values reach 18-19°C and minimum winter values of 7-8°C were recorded.

Six vessels sank in the area more than 50 years ago, which also denotes the difficult conditions for nautical activities. The shipwrecks of the freighter James Clunies (149 m length, sunk in 1949 at 10 m depth), over a restinga are frequently visited by local divers. In addition, in 1981 a submarine park was built on soft bottoms close to Restingas and Bancos, by sinking the wood-vessel Cristo Rey (45 m length) at 22 m depth, thus creating another site of interest for divers (Iñurieta, 2005; Genzano, 2010).

MATERIALS AND METHODS

Several exploratory dive surveys were conducted between July 2000 and May 2005 in the study area with the aim to provide an assessment of the habitat types and to select sampling sites. All census and collections were carried out by SCUBA diving at the different rocky outcrops and artificial reefs (shipwrecks), between 1 and 23 m depth. A total of 26 dives (≈ 900 min of immersion) were performed during the study. Topographical characterization and macro-invertebrates census were performed during November and December 2005, austral spring (a period in which most species would likely be present) in 11 sites: Restingas Faro (R0), Primera (R1), Segunda (R2) and Tercera (R3), Bancos Pescadores Sur (PS), del Medio (BM), Banco de Afuera (BA) and

the sedimentary slope in BA (BAS) and shipwrecks James Clunies vertical (JCV) and horizontal (JCH) substrata and Cristo Rey (CR) (Fig. 1).

In each site three parallel 10 m chains, horizontally positioned, separated by 5 m were laid out at random, performing line-intercept transects (Loya, 1978), writing down the nature of the substrate (coverage over the length on the chain), according with predefined categories of substrata (modified from Woodman, 1999): boulders (human size or bigger), rocks (size of an arm or legs), stones (hand size), pebbles (finger size), mud/sand/bioclast (fine particle). Live cover of conspicuous macrobenthic organisms (algae, sponges, cnidarians, blue mussels, sea stars, sea urchins) was also measured. These data provided information on the relative cover of major benthic groups, used to define community types. Coverage was recorded counting the number of chain links covering the different species, method previously used in cnidarian's censuses in the area (Genzano *et al.*, 2002).

In addition, qualitative samples were collected in some particular microhabitats to identify taxa when stereoscopic microscope observation was needed in order to give the baseline inventory list from this almost unexplored area, which was complemented by underwater observations and video recording conducted during 2007 and 2008 using rovers diver transects (RDT).

As a measure of topographic complexity, the Rugosity index (Ri) was calculated using the ratio of a length of the chain moulded to the surface to the linear distance between its start and end points and it was expressed as percentages as follows: $Ri (\%) = (1 - [\text{length of chain } in \text{ situ} / \text{total length of chain}]) \times 100$ (Luckhurst & Luckhurst, 1978; Francour & Koukouras, 2000). In addition, the Cavity index (Cav), was calculated as follows: $Cav = B^2 \cdot 100 / (A^2 + B^2)$, where "A" is the mean size of the external face of blocks and "B" is the mean size of cavity apertures between blocks and rocks (Ruitton *et al.*, 2000). Average height, the distance from the bottom substrate to the top of the 10 highest blocks within a transect, was also estimated as other assessment of habitat architecture (Gratwicke & Speight, 2005).

Quantification of fishes represent a special problem because of their mobility, hence censuses are necessary subjective and reliant upon water condition. Visual censuses were performed swimming freely throughout a dive site during 15 min in each survey and recording every fish species that could be positively identified (Lessios, 1996). Since local species do not conform dense fish schools, each recorded species was assigned into one of four relative

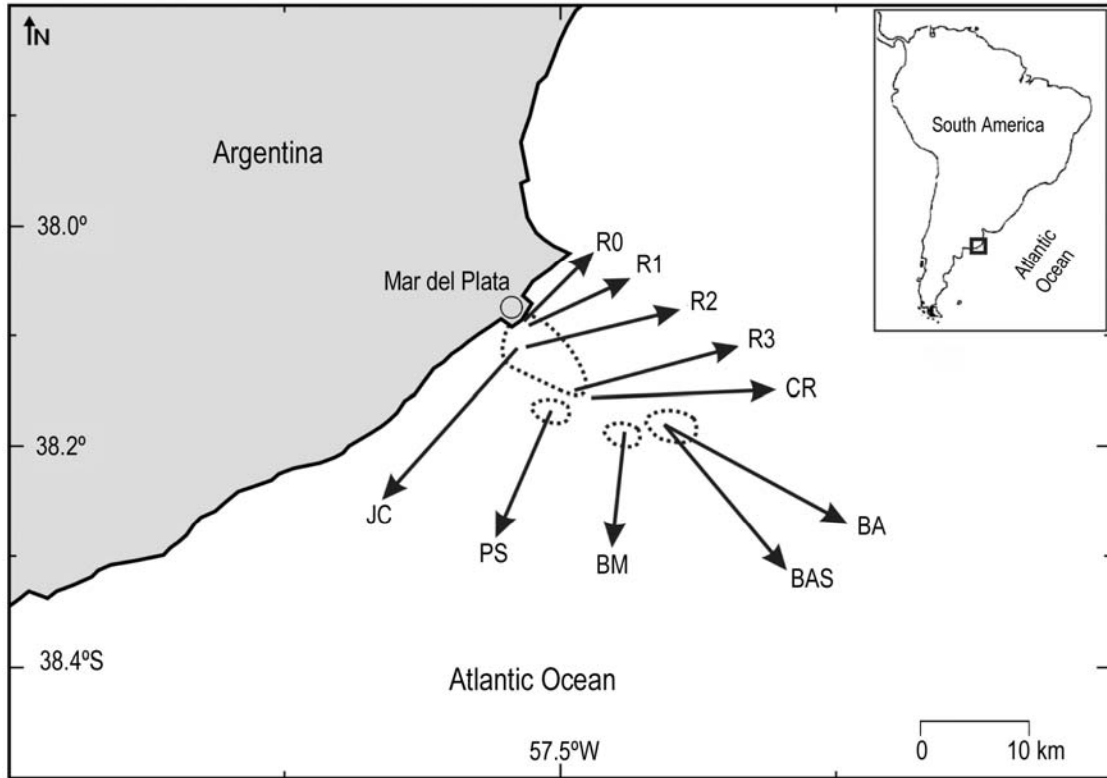


Figure 1. Location of sites surveyed in this study. Natural outcrops: Restingas Faro (R0), Primera (R1), Segunda (R2) and Tercera (R3), Banco Pescadores Sur (PS), Banco del Medio (BM), Banco de Afuera (BA) and the sedimentary slope in BA (BAS). Artificial reefs (shipwrecks): James Clunies, (JC) and Cristo Rey (CR). Dotted lines: continuous outcrops formations.

Figura 1. Localización de los sitios examinados en este estudio. Arrecifes naturales: Restingas Faro (R0), Primera (R1), Segunda (R2) y Tercera (R3), Banco Pescadores Sur (PS), Banco del Medio (BM), Banco de Afuera (BA) y elevación de roca sedimentaria en BA (BAS). Arrecifes artificiales (pecios): James Clunies (JC) y Cristo Rey (CR). Líneas punteadas: formaciones arrecifales continuas.

abundance categories (modified from Pattengill-Semmens, 2001): occasional (O): a single individual, scarce (S): 2-5 individuals, abundant (A): 6 a 10 and very abundant (Va): more than 10 individuals observed during the immersion. Frequency was calculated as the ratio between numbers of dives in which a species was found and the total dives conducted. Three categories were assigned: less frequent (LF): recorded in less than 20%; frequent (F): recorded between 20-50% and very frequent (VF): recorded in more of the 50% of total dives.

A non-parametric multivariate analysis was applied to environmental and biological data. Similarity of sites using physical variables (depth, substrate categories and topographic complexity) was determined by ordination methods (MDS, using group average sorting of the Euclidean distance of physical data). In a similar way, changes in species composition among sampling sites was determined by ordination methods (MDS, group average sorting of

the Bray-Curtis similarity measures on cover data) using PRIMER software (Clarke & Warwick, 2001). The SIMPER analysis (similarity percentages) was used to identify those species which contributed most to (dis)similarities among and within groups. This analysis calculates the "average similarity" (contribution of the i_{th} species to the overall dissimilarity between the groups considered) and the "internal similarity" (contribution each species makes to the average similarity within each group considered) (see Clarke & Warwick, 2001 for details). The ANOSIM test was used to search for differences between groups of sampling sites (R0 to CR: natural vs artificial reefs, horizontal vs. vertical communities). This permutation test analyses composition differences between replicates within sites contrasted with differences between sites, computing an R-statistic under the null hypothesis "no differences between sites". R falls between -1 and 1, so R is ~ 0 if the null hypothesis is true and $R = 1$ if all replicates within sites are more

similar to each other than are replicates from different sites. Finally, the BIO-ENV procedure was used to determine which set of environmental variables (similarity calculated with the Euclidean distance coefficient) best explains the biological matrices (presence-absence data, using Bray-Curtis similarity measure) (Clarke & Warwick, 2001).

RESULTS

The first sublittoral Rocky Outcrop (R0) is located 300 m off the costal line; its shallower zone remains partially exposed to the air during extraordinary low tide. This outcrop is conformed mainly by boulders and big rocks which reach 1-2 m depth. Other two outcrops of similar topography (R1 and R2) are found between 5-10 m depth. Conform the depth increases, rocks and stone coverage are more important and, consequently seafloor roughness is higher. Broken mollusk shells and sand are usually accumulated in cavities, crevices and channels. The outcrop R3 lies between 12-14 m depth and BM, BA and PS between 19-23 m depth. The most remarkable difference in topography and composition of the sea floor is found in BA, due to the presence of a slope 1-1.5 m height (BAS) of consolidated sedimentary rocks (coquina with abundant shell fragments).

Two shipwrecks constitute extensive ARs. The first one, the vessel James Clunies, is located on rocky bottoms in R2; the boiler remains in a vertical position up to 2 m from the seafloor (JCV), while the deck offers horizontal substrata (JCH). The other AR, the vessel Cristo Rey (CR), is located in soft bottoms near R3, offers numerous and discontinuous hard substrata of complex topography (Table 1).

A total of 108 taxa were recorded in the study area, including 7 macroalgae, 98 invertebrates and 3 tunicates. Twenty one were the most conspicuous taxa both NR and AR and they were used in quantitative assessment of living cover of macrobenthic organisms (see above). The remainder species correspond mainly to small size organisms associated to mussel beds and/or epizoites on big clumps hydroid colonies. Other macrobenthic organisms were rarely observed due to their difficult detection because of scarce abundance or cryptic habits (Tables 2 and 3).

The pattern of samples agrees with depth and position in the substrate (Fig. 2). A gradient from substrates exposed during exceptional low tides to deepest sites was observed. The outcrop R0, dominated by *Corallina officinalis* and *Ulva lactuca* (72 and 24% cumulative contribution respectively, SIMPER analysis), was clearly separated from the rest

of the sampling sites, which followed a gradient from shallow to deep ones: R1, R2, R3, JCH, PS, BA (typical species *Mytilus platensis*, 69.0-99.2%), CR, BM and BAS (*Tripalea clavaria* 57.6-98.3%) (Fig. 3). No differences were found between horizontal AR and the adjacent NRs. Main differences were found between vertical vs. horizontal communities, both in NR and AR (BAS and JVC respectively) (Fig. 3, see Tables 4 and 5). JCV was slightly separated from the rest due to its distinct biological composition established in a vertical artificial substrate (*Anthothoe chilensis* 99.3%) (Fig. 3).

The best combination of structural features explaining the biological matrix (BIO-ENV) included the combination of the following variables: Fine Sediment, RI, Height and Depth (Sample statistic Rho: 0.495); RI, Height, Depth (Sample statistic Rho: 0.493) and Height and Depth (Sample statistic Rho: 0.490).

Fifteen reef fish species were recorded during the 35 visual censuses conducted during this study. Species richness was lower in shallower outcrops than in deeper ones (8 vs. 14 species). Six species were found in all AR and NR (Table 6). Overall, only 4 species (26.7% of the total) were classified as frequent or very frequent: *Diplodocus argenteus*, *Pagrus pagrus*, *Dules auriga* and *Pinguipes brasilianus*, the last one was the most abundant in all sites. *Acanthistius brasilianus* was recorded with highest abundance and frequency values in the shipwrecks (AR) but infrequent in the outcrops (NR), with the exception of caves and crevices from BAS. The few specimens of *Pseudoperca semifasciata* observed during the visual censuses were reported in the same cryptic habitats (AR and BAS). The remaining fish species occurred with low frequency, usually single specimens, with the exception of a large shoal of *Seriola lalandei* observed in the deep outcrops.

DISCUSSION

Our results provide information on sublittoral faunal assemblages from unexplored locations of southwestern Atlantic coasts. The rocky outcrops in the area of Mar del Plata were composed by distinct benthic communities than those previously studied from nearby rocky intertidal and soft bottoms areas. The intertidal zones are dominated by the mytilid *Brachidontes rodriguezii* (Olivier *et al.*, 1966; Penchaszadeh, 1973; Scelzo *et al.*, 1996). On the other hand, subtidal coarse sandy adjacent areas between 18 and 25 m depth are dominated by the sea urchin *Encope emarginata*, while deeper and finer bottoms

Table 1. Measures of substrate topography (average \pm standard deviation) along the natural and artificial reefs of the study area. Natural reefs: Restingas Faro (R0), Primera (R1), Segunda (R2) and Tercera (R3), Banco Pescadores Sur (PS), Banco del Medio (BM), Banco de Afuera (BA) and the sedimentary slope in BA (BAS). Artificial reefs: James Clunies horizontal (JCH) and vertical (JCV), and Cristo Rey (CR). RI: rugosity index. CI: Cavity index.

Table 1. Medidas de la topografía del sustrato (promedio \pm desviación estándar) en los arrecifes naturales y artificiales del área de estudio. Arrecifes naturales: Restingas Faro (R0), Primera (R1), Segunda (R2) y Tercera (R3), Banco Pescadores Sur (PS), Banco del Medio (BM), Banco de Afuera (BA) y cordón sedimentario en BA (BAS). Arrecifes artificiales: James Clunies horizontal (JCH) y vertical (JCV), y Cristo Rey (CR). RI: índice de rugosidad. CI: índice de cavidad.

	Natural reef										Artificial reef		
	R0	R1	R2	R3	BM	BA	BAS	PS	JCH	JCV	CR		
Boulder (%)	46.0 \pm 7.5	67.5 \pm 5.5	42.3 \pm 7.4	3.0 \pm 1.4	8.7 \pm 3.3	1.67 \pm 1.7	85.0 \pm 2.5	12.3 \pm 4.5	0	0	0		
Rocks (%)	37.0 \pm 5.5	26.5 \pm 4.7	27.3 \pm 4.8	55.0 \pm 2.9	45.0 \pm 5.5	46.9 \pm 4.9	5.3 \pm 1.8	38.7 \pm 4.9	0	0	16.5 \pm 5.9		
Stones (%)	8.7 \pm 2.5	7.2 \pm 1.7	16.7 \pm 2.8	13.6 \pm 2.3	21.3 \pm 3.6	21.3 \pm 3.5	1.0 \pm 0.6	17.3 \pm 3.7	0	0	13.3 \pm 5.3		
Pebbles (%)	0	0.3 \pm 0.2	1.3 \pm 0.6	2.8 \pm 0.9	2.7 \pm 0.9	1.33 \pm 0.63	0.3 \pm 0.3	10.3 \pm 2.9	0	0	1.4 \pm 0.8		
Fine Sediments (%)	8.7 \pm 1.6	2.7 \pm 0.8	11.3 \pm 2.1	24.9 \pm 2.6	19.7 \pm 2.9	29.7 \pm 2.8	8.3 \pm 1.8	36.0 \pm 3.1	5.5 \pm 3.0	0	34.1 \pm 7.3		
RI (%)	23.3 \pm 2.5	42.8 \pm 2.1	35.8 \pm 1.2	44.5 \pm 0.3	49.6 \pm 1.4	39.4 \pm 1.3	59 \pm 0.65	35.7 \pm 1.6	0	0	51.9 \pm 3.3		
CI (%)	22.25	19.16	27.69	36.4	41.56	41.4	0	44.3	0	0	0		
Height (cm)	16,1 \pm 0.7	20 \pm 1.0	18,1 \pm 1.2	27,7 \pm 3.0	35,0 \pm 3.5	24,0 \pm 2.3	60,0 \pm 10.0	20,0 \pm 3.8	10,0 \pm 2.2	200	60,0 \pm 8.3		
Depth (m)	1	7	10	14	20	21	22	21	10	10	23		

Table 2. List of the taxa observed at sublittoral natural outcrops and artificial reefs of the study area. (*) Taxa used in quantitative analysis, 1) Epizoite on bigger hydroid colonies, 2) ecto-parasites on the hydroid *Amphisbetia operculata*, 3) endolithic organisms inhabiting BAS; 4) endobiont in the the gorgonean *Tripalea clavaria*, 5) specimens inhabiting fine sediments accumulated in cavities and crevices.

Tabla 2. Lista de taxa observados en los arrecifes naturales y artificiales del área de estudio. (*) Taxa utilizados en los análisis cuantitativos, 1) Epizoicos sobre grandes colonias hidroides, 2) ecto-parásitos sobre el hidroide *Amphisbetia operculata*, 3) organismos endolíticos que habitan el BAS, 4) endobiontes en el gorgonáceo *Tripalea clavaria*; 5) especímenes que habitan los sedimentos finos acumulados en cavidades y grietas.

Algae:	<i>Ceramium virgatum</i> Roth 1797; <i>Codium fragile</i> (Suringar); <i>Corallina officinalis</i> L ^(*) ; <i>Polysiphonia</i> sp. ^(*) <i>Pterosiphonia</i> sp.; <i>Rhodomenia</i> sp. ^(*) ; <i>Ulva lactuca</i> L. ^(*) .
Porifera:	<i>Callyspongia</i> sp.; species indet. 1 ^(*) ; species indet. 2 ^(*) , species indet. 3 ^(*) , species indet. 4 ^(*) , species indet. 5 ^(*) , species indet. 6 ^(*) .
Cnidaria:	<i>Aglaophenia acacia</i> Allman, 1883; <i>Amphisbetia operculata</i> (Linnaeus, 1758) ^(*) ; <i>Antholoba achates</i> (Drayton, 1846); <i>Anthothoe chilensis</i> (Lesson, 1830) ^(*) ; <i>Astrangia rathbuni</i> Vaughan, 1906; <i>Aulactinia</i> sp. ^(*) ; <i>Bimera vestita</i> Wright, 1859; <i>Campanularia agas</i> Cornelius, 1982 ⁽¹⁾ ; <i>Choriactis laevis</i> (Carlgren, 1899); <i>Clytia gracilis</i> (Sars, 1851) ⁽¹⁾ ; <i>Corynactis carnea</i> Studert, 1878 ^(*) ; <i>Coryne eximia</i> Allman, 1859; <i>Dynamena cornicina</i> McCrady, 1859; <i>Ectopleura crocea</i> (Linnaeus, 1758); Familia Plexauridae species indit.; <i>Filellum</i> sp. ⁽¹⁾ ; <i>Halecium beanii</i> (Johnston, 1838); <i>Halecium delicatum</i> Coughtrey, 1876; <i>Hebella sbandens</i> (Bale, 1888) ⁽¹⁾ ; <i>Monostaechas quadridens</i> (McCrady, 1859); <i>Monotheca pulchella</i> (Bale, 1882); <i>Obelia</i> sp., Order Ceriantharia species indet.; <i>Plumularia setacea</i> (Linnaeus, 1758) ^(*) ; <i>Sagartia troglodytes</i> Price in Johnston, 1847; <i>Sertularella mediterranea</i> Hartlaub, 1901 ^(*) ; <i>Sertularella striata</i> Stechow, 1923; <i>Tricnidactis errans</i> (Pires, 1988); <i>Tripalea clavaria</i> (Studert, 1878) ^(*) .
Plathelmintha:	<i>Notoplana</i> sp.
Nematoda:	<i>Deontostoma</i> sp., <i>Enoplus</i> sp., <i>Pseudocella</i> sp.
Nemertina:	species indet. 1
Bryozoa:	<i>Aetea anguina</i> (Linnaeus, 1758) ⁽¹⁾ ; <i>Bicelariella</i> sp.; <i>Bugula</i> sp.; <i>Celleporella</i> sp., <i>Membranipora</i> sp.; <i>Osthimosia</i> sp. ⁽¹⁾ ; species indet.
Crustacea:	<i>Balanus improvisus</i> (Darwin, 1854); <i>Balanus trigonus</i> (Darwin, 1854); <i>Caprella equilibra</i> Say, 1818; <i>Corophium insidiosum</i> (Crawford, 1937); <i>Jassa falcata</i> (Montagu, 1808); <i>Halicarcinus planatus</i> (Fabricius, 1775); <i>Idotea baltica</i> (Pallas, 1772); <i>Leucipa pentogona</i> Milne Edwards, 1833; Orden Tanaidacea species indet.; <i>Pachycheles laevidactylus</i> Ortmann, 1892; <i>Platyxanthus crenulatus</i> (Milne Edwards, 1879); <i>Pleoticus muelleri</i> (Bate, 1888); <i>Serolis</i> sp.
Annelida:	<i>Capitela "capitata"</i> sp.; <i>Diopatra viridis</i> Kinberg 1865; <i>Eunice</i> sp.; <i>Halosydnella australis</i> (Kinberg, 1855); Lumbrineridae species indet.; <i>Neanthes succinea</i> (Frey & Leuckart, 1847); Nereidae species indet.; Ophelidae species indet.; Orbiniidae species indet.; <i>Phyllochaetopterus socialis</i> Claparède, 1870; Polonoidae species indet.; <i>Polygordius appendiculatus</i> Fraipont, 1887; <i>Procerastea halleziana</i> Malaquin, 1893 ⁽²⁾ ; Serpulidae species indet.; <i>Syllis</i> sp.; Terebridae species indet.
Sipunculida:	<i>Themistes petricola</i> (Amor, 1964) ⁽³⁾ .
Mollusca:	<i>Aequipecten tehuelchus</i> (d'Orbigny, 1846); <i>Anachis</i> sp.; <i>Atrina seminuda</i> (Lamarck, 1819); <i>Calliostoma</i> sp.; <i>Crepidula</i> sp.; <i>Chaetopleura</i> sp.; Doridoidea species indet.; <i>Fisurellidea megatrema</i> d'Orbigny, 1841; <i>Litophaga patagonica</i> (D'Orbigny, 1847) ⁽³⁾ ; <i>Musculus viator</i> (d'Orbigny, 1846) ⁽⁴⁾ ; <i>Mytilus platensis</i> D'Orbigny, 1846 ^(*) ; <i>Ostrea puelchana</i> D'Orbigny, 1841; <i>Tegula</i> sp.
Pycnogonida:	<i>Achelia assimilis</i> (Haswell, 1885); <i>Tanystylum orbiculare</i> Wilson, 1878.
Echinodermata:	<i>Arbacia dufresnei</i> (Blainville, 1825) ^(*) ; <i>Asterina sterifer</i> (Mobius, 1859) ^(*) ; Dendrochirotida species indet. ⁽⁴⁾ ; <i>Ophioplocus januarii</i> (Lütken, 1856).
Tunicata:	species indet.; <i>Molgula</i> sp.; <i>Sycozoa umbellata</i> (Michaelsen, 1898).

Table 3. Living cover (average \pm standard deviation) of macrobenthic organisms at natural and artificial reefs of the study area.
Tabla 3. Cobertura (promedio \pm desviación estándar) de organismos macrobentónicos en arrecifes naturales y artificiales del área de estudio.

	Natural reef						Artificial reef				
	R0	R1	R2	R3	BM	BA	BAS	PS	JCH	JCV	CR
<i>Ulva lactuca</i>	9.0 \pm 2.5	-	-	-	-	-	-	-	-	-	-
<i>Corallina officinalis</i>	26.0 \pm 5.8	-	-	-	-	-	-	-	-	-	-
<i>Polysiphonia</i> sp.	-	0.5 \pm 0.2	0.1 \pm 0.09	-	-	-	-	-	-	-	-
<i>Rhodomyenia</i> sp.	-	0.2 \pm 0.1	-	1.4 \pm 0.2	-	-	-	-	1.1 \pm 0.2	-	-
Porifera sp. 1	-	2.6 \pm 1.4	-	-	-	-	-	-	-	-	-
Porifera sp. 2	-	-	-	-	-	-	-	-	0.67 \pm 0.15	-	-
Porifera sp. 3	-	-	-	-	-	-	-	-	0.4 \pm 0.1	-	-
Porifera sp. 4	-	-	-	-	-	-	-	-	-	4.4 \pm 1.0	-
Porifera sp. 5	-	-	-	-	-	-	-	-	-	-	0.3 \pm 0.3
Porifera sp. 6	-	-	-	-	-	-	-	-	-	-	0.17 \pm 0.1
<i>Amphisbetia operculata</i>	-	-	-	0.1 \pm 0.1	2.4 \pm 0.5	0.5 \pm 0.2	-	0.9 \pm 0.4	1.9 \pm 0.4	-	3.1 \pm 1.1
<i>Anothoe chilensis</i>	-	0.17 \pm 0.1	1.8 \pm 0.5	1.9 \pm 0.6	0.2 \pm 0.1	0.03 \pm 0.03	-	0.4 \pm 0.2	1.5 \pm 0.3	34.1 \pm 7.6	3.1 \pm 2.7
<i>Aulactinia</i> sp.	-	0.1 \pm 0.05	-	-	-	-	-	-	-	-	-
<i>Corynactis carnea</i>	-	-	-	-	-	-	0.6 \pm 0.3	-	-	-	-
<i>Ectopleura crocea</i>	-	-	-	-	-	-	-	-	-	1.2 \pm 0.3	0.17 \pm 0.16
<i>Sertularella mediterranea</i>	-	-	-	0.1 \pm 0.1	0.1 \pm 0.1	-	-	0.1 \pm 0.07	08 \pm 0.2	-	-
<i>Plumularia setacea</i>	-	-	-	-	1.2 \pm 0.3	2.1 \pm 0.4	0.5 \pm 0.2	0.2 \pm 0.1	1.0 \pm 0.2	-	0.13 \pm 0.1
<i>Tripalea clavaria</i>	-	-	-	-	11.7 \pm 1.0	0.57 \pm 0.3	7.9 \pm 0.9	0.03 \pm 0.03	-	-	3.0 \pm 1.0
<i>Mytilus platensis</i>	9.7 \pm 4.0	12.7 \pm 4.2	54.5 \pm 5.8	43.3 \pm 5.7	12.1 \pm 2.7	32.7 \pm 4.6	-	32.3 \pm 4.6	36.1 \pm 8.0	2.4 \pm 0.5	-
<i>Arbacia dufresnei</i>	-	0.1 \pm 0.05	0.1 \pm 0.05	0.03 \pm 0.03	0.07 \pm 0.04	0.03 \pm 0.03	-	0.07 \pm 0.05	0.2 \pm 0.05	-	0.18 \pm 0.03
<i>Asterina sterifer</i>	-	0.1 \pm 0.06	0.1 \pm 0.06	0.3 \pm 0.1	0.1 \pm 0.05	0.1 \pm 0.04	0.1 \pm 0.08	0.1 \pm 0.06	0.4 \pm 0.08	-	0.03 \pm 0.03

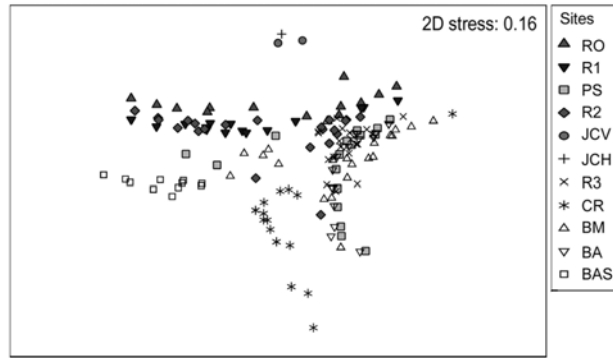


Figure 2. MDS ordination of sites (natural and artificial reefs) using group average sorting of the Euclidean distance measure on physical data (substrate topography). Natural outcrops: Restingas Faro (R0), Primera (R1), Segunda (R2) and Tercera (R3), Banco Pescadores Sur (PS), Banco del Medio (BM), Banco de Afuera (BA) and the sedimentary slope in BA (BAS). Artificial reefs: James Clunies horizontal (JCH) and vertical (JCV), and Cristo Rey (CR).

Figura 2. Ordenamiento MDS de los sitios (arrecifes naturales y artificiales) usando los promedios de la distancia Euclídea de los datos físicos (topografía del sustrato). Arrecifes naturales: Restingas Faro (R0), Primera (R1), Segunda (R2) y Tercera (R3), Banco Pescadores Sur (PS), Banco del Medio (BM), Banco de Afuera (BA) y elevación de roca sedimentaria en BA (BAS). Arrecifes artificiales (pecios): James Clunies horizontal (JCH) y vertical (JCV), y Cristo Rey (CR).

up to 64 m depth show the presence of *Mytilus platensis* banks of high species richness (Bremec & Roux, 1997). In the rocky outcrops herein studied, red calcareous algae dominated the shallowest NR while a conspicuous mytilid assemblage was present in NRs deeper than 3 m; sea anemones were more abundant between 6-10 m and soft-corals at nearly 20 m depth (Fig. 4). Epizoism was an important phenomenon in the area, mainly on sertulariid and plumulariid hydroids (see Table 1).

A wide array of structural features is known to affect the settlement of benthic invertebrates onto natural and artificial substratum, including spatial orientation, structural complexity, substratum composition and texture (Moura *et al.*, 2006; Perkol-Finkel *et al.*, 2006; Thanner *et al.*, 2006). Community structures developed in horizontal AR (JCH) after nearly sixty years were similar to neighboring NR communities (R1 and R2), while dominant taxa differed notably within vertical or horizontal ARs and NRs. Perkol-Finkel *et al.* (2006) found that if submersion time is prolonged, ARs can mimic adjacent NRs only if they possess similar structural features. However, if they

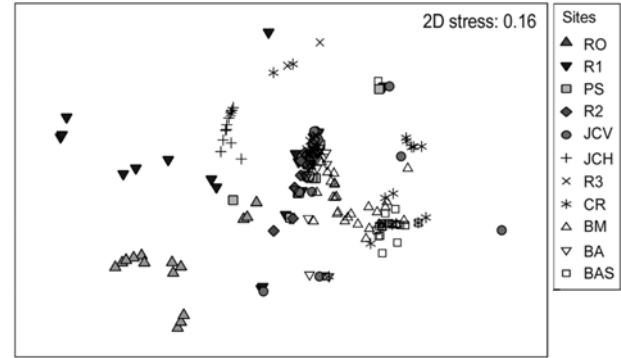


Figure 3. MDS ordination of sites (natural outcrops and artificial reefs) using group average sorting of the Bray-Curtis similarity measures on cover data. Natural outcrops: Restingas Faro (R0), Primera (R1), Segunda (R2) and Tercera (R3), Banco Pescadores Sur (PS), Banco del Medio (BM), Banco de Afuera (BA) and the sedimentary slope in BA (BAS). Artificial reefs: James Clunies horizontal (JCH) and vertical (JCV), and Cristo Rey (CR).

Figura 3. Ordenamiento MDS de los sitios (arrecifes naturales y artificiales) usando promedios de las medidas de similitud Bray-Curtis de los datos de cobertura. Arrecifes naturales: Restingas Faro (R0), Primera (R1), Segunda (R2) y Tercera (R3), Banco Pescadores Sur (PS), Banco del Medio (BM), Banco de Afuera (BA) y elevación de roca sedimentaria en BA (BAS). Arrecifes artificiales (pecios): James Clunies horizontal (JCH) y vertical (JCV), y Cristo Rey (CR).

differ structurally, their communities will remain distinct. Our results are in accordance with previous works that demonstrated clear consistent differences, even considering long periods of AR submersion, between epibiotic assemblages settled on horizontal and vertical surfaces (Moura *et al.*, 2006; Perkol-Finkel *et al.*, 2006; Thanner *et al.*, 2006). Proximity to the seafloor and shading can markedly influence the development of distinct epibiotic assemblages in subtropical and tropical waters (Glasby & Connell, 2001; Perkol-Finkel *et al.*, 2006).

Suspended particles are highly dependent on the existence of elevated structures mostly because the water current velocity increases when passing by the edge of them (Falcão *et al.*, 2009). The a zooxanthellate soft-coral *Tripalea clavaria*, which also occur in soft bottom up to 70 m depth, depends on the flow current to feed (Olivier *et al.*, 1968; Acuña *et al.*, 2004). Thus, its abundance in BAS and CR could be explained by the vertical disposition of these substrata that affect the fluxes of suspended material. The small sea anemone *Anthothoe chilensis* monopolized the available artificial vertical substrata, *i.e.* 5000 ind m⁻²

Table 4. R values of the ANOSIM test (global $r = 0.514$, $P < 0.1\%$) for every pair comparison among sites (natural and artificial reefs) according to its biological composition. Significant values in bold ($P < 0.1\%$). Natural outcrops: Restingas Faro (R0), Primera (R1), Segunda (R2) and Tercera (R3), Banco Pescadores Sur (PS), Banco del Medio (BM), Banco de Afuera (BA) and the sedimentary slope in BA (BAS). Artificial reefs: James Clunies horizontal (JCH) and vertical (JCV), and Cristo Rey (CR).

Tabla 4. R valores del test ANOSIM (global $r = 0,514$, $P < 0,1\%$) para cada comparación pareada entre sitios (arrecifes naturales y artificiales) acorde a su composición biológica. Valores significativos en negrita ($P < 0,1\%$). Arrecifes naturales: Restingas Faro (R0), Primera (R1), Segunda (R2) y Tercera (R3), Banco Pescadores Sur (PS), Banco del Medio (BM), Banco de Afuera (BA) y elevación de roca sedimentaria en BA (BAS). Arrecifes artificiales (pecios): James Clunies horizontal (JCH) y vertical (JCV), y Cristo Rey (CR).

	R0	R1	R2	R3	PS	BM	BA	BAS	JCH	JCV
R0										
R1	0,39									
R2	0,76	0,29								
R3	0,66	0,19	-0,005							
PS	0,70	0,19	0,05	0,07						
BM	0,85	0,47	0,68	0,67	0,55					
BA	0,72	0,21	0,08	0,13	0,01	0,57				
BAS	0,82	0,58	0,94	0,86	0,88	0,33	0,87			
JCH	0,50	0,02	0,24	0,19	0,20	0,58	0,23	0,72		
JCV	0,86	0,47	0,99	0,88	0,94	0,99	0,98	0,91	0,69	
CR	0,55	0,29	0,76	0,58	0,64	0,38	0,62	0,29	0,28	0,56

Table 5. SIMPER ("similarity percentages" analysis) results for the natural and artificial reefs of the study area (average similarity within groups in brackets). Typical species (those contributing more than 90% to the average similarity for each group) are listed (% contribution in brackets), Av. Abund.= average cover data, Contrib. % = contribution in percentage, Cum. % = cumulative percentage.

Tabla 5. Resultados del SIMPER ("similarity percentages" analysis) para los arrecifes naturales y artificiales del área de estudio (similitud promedio entre grupos entre paréntesis) y lista de las especies típicas (aquellas que contribuyen en más de un 90% de la similitud promedio para cada grupo). Av. Abund.= promedio datos de cobertura, Contrib. % = contribución en porcentaje, cum. % = porcentaje acumulativo.

Substrate type	Species	Av. Abund.	Contrib. %	Cum. %
Natural (28.01%)	<i>Mytilus platensis</i>	29.49	83.65	83.65
	<i>Tripalea clavaria</i>	3.14	12.31	95.95
Artificial				
JCH (23.56%)	<i>Mytilus platensis</i>	36.67	96.18	96.18
JCV (70.23%)	<i>Anthothoe chilensis</i>	72.37	99.34	99.34
CR (18.6%)	<i>Tripalea clavaria</i>	4.40	57.58	57.58
	<i>Amphisbetia operculata</i>	4.55	40.32	97.90

in JCV (Fig. 5). Such high abundance could be explained by its preference to colonize substrata where water currents guarantee a continuous supply of food and avoid the negative effects of sedimentation. This species also occurs in dense patches in the intertidal

fringe (Excoffon *et al.*, 1997). Its higher abundances could be also favored by its reproductive strategy by longitudinal fission (Excoffon & Acuña, 1998). Other fast growing sea anemone, *Metridium senile* (Linnaeus, 1761), has a similar asexual mechanism

Table 6. Relative abundance (Ra) and frequency (F) of fishes from natural reefs (*Restingas y Bancos*) and artificial reefs in the study area. Ra code: occasional (o) = a single individual, scarce (s) = 2-5 individuals, abundant (a) = 6-10 and very abundant (va) = more than 10 individuals observed during the immersion. F code: less frequent (lf) = recorded in less than 20 %; frequent (f) = recorded between 20-50 % and very frequent (vf) = recorded in more of the 50 % of total dives in each place.

Tabla 6. Abundancia relativa (Ra) y frecuencia (F) de los peces de los arrecifes naturales (*restigas y bancos*) y los arrecifes artificiales del área de estudio. Código de Ra: ocasional (o): un individuo, escasos (s): 2-5 individuos, abundantes (a): 6-10 y muy abundantes (va): mas de 10 individuos observados durante la inmersión. Código de F: poco frecuente (lf): registrada en menos del 20%; frecuente (f): registrada entre el 20-50% y muy frecuente (vf): registrada en mas del 50% de total de inmersiones en cada lugar.

Species	Common name	Natural reef		Artificial reef	
		Restingas	Bancos	J. Clunies	Cristo Rey
		Ra (F)	Ra (F)	Ra (F)	
<i>Acanthistius brasilianus</i>	Argentine sea bass	s (f)	a (f)	va (vf)	va (vf)
<i>Bovichthys argentinus</i>		o (lf)	--	--	--
<i>Conger orbignyamus</i>		--	o (lf)	--	s (f)
<i>Diplodocus argenteus</i>	White bream	Va (vf)	s (vf)	va (vf)	va (vf)
<i>Discopyge tschudii</i>	Electric ray	--	o (lf)	--	--
<i>Dules auriga</i>		s (vf)	s (f)	s (lf)	s (lf)
<i>Pagrus pagrus</i>	Red porgy	s (vf)	a (vf)	s (lf)	s (lf)
<i>Paralichthys patagonicus</i>	Flounder	o (lf)	o (lf)	--	--
<i>Pinguipes brasilianus</i>	Brazilian sandperch	Va (vf)	va (vf)	va (vf)	va (vf)
<i>Pseudoperca semifasciata</i>	Brazilian sandperch	--	o (lf)	s (f)	s (f)
Rajidae species indet.	Eagle ray	o (lf)	o (lf)	o (lf)	o (lf)
<i>Seriola lalandi</i>	Yellowtail amberjack	--	ma (lf)	--	--
<i>Squatina</i> sp.		--	o (lf)	--	--
<i>Triathalassothia argentina</i>		--	o (lf)	--	--
<i>Urophycis brasiliensis</i>	Brazilian codling	--	o (lf)	o (lf)	o (lf)
Number of census		10	16	5	4

and is usually found colonizing shipwrecks in other coastal temperate waters in Belgium (Zintzen *et al.*, 2008) and Patagonia (G. Genzano, *pers. obs.*).

In AR, spatial complexity increases habitat heterogeneity, providing increased areas of refuge for fish populations from predation and competition. Reef fishes also represent an attraction for recreational divers, and for sport angler fishers (Galván *et al.*, 2009). Fifteen species were recorded in the analyzed area. Abundance and frequency values registered by visual censuses for some species could be underestimated due to their particular behavior; *e.g.* *Dules auriga* and *Bovichthys argentinus* are two shy fishes which usually avoid divers and *Triathalassothia argentina* is a cryptic and sedentary species with nocturnal habits. However; the data clearly indicated that species having strong site fidelity, *i.e.* *Acanthistius brasilianus* (Irigoyen & Venerus, 2008)

and *Pseudoperca semifasciata*, were clearly more abundant and/or frequent in ARs (shipwrecks) compared to the surrounding NRs, suggesting a preference for habitat with more complex structure. In NRs these species occur only in cliffs and crevices of BAS but they are rare or absent in the less structurally complex outcrops.

This pioneer study in the surveyed area clearly shows that outcrops allow the settlement of diverse and rich assemblages. Artificial reefs allow not only the settlement of benthic invertebrates but also provide refuge for fishes. As recreational fishery and diving are intensifying its activities in Mar del Plata, where tourism is one of the main economical resources, the protection of such areas should be considered in conservation plans. Future management plans should have into account the frequency of dive-expeditions in these coastal habitats.



Figure 4. Natural reefs dominated by the mussel *Mytilus platensis*. a) R2 (*Dules auriga*, a typical rocky outcrop fish, over mussel beds), b) R3 (the sea urchin *Arbacia dufresneii* and the sea star *Asterina stellifer*), c) BA (general view of the outcrop with some individuals of the Brazilian sandperch *Pinguipes brasilianus*) and d) BAS (mussels, the sea urchin *A. dufresneii* and the soft-coral *Tripalea clavaria*). R2: Segunda Restinga. R3: Tercera Restinga. BA: Banco de Afuera. BAS: sedimentary slope in BA. Scale bar: 10 cm.

Figura 4. Arrecifes naturales dominados por el mejillón *Mytilus platensis*. a) R2 (*Dules auriga*, un típico pez de los arrecifes rocosos sobre banco de mejillones), b) R3 (el erizo de mar *Arbacia dufresneii* y la estrella de mar *Asterina stellifer*), c) BA (vista general del arrecife con algunos individuos del “turco” *Pinguipes brasilianus*) y d) BAS (mejillones, el erizo de mar *A. dufresneii* y el coral blando *Tripalea clavaria*). R2: Segunda Restinga. R3: Tercera Restinga. BA: Banco de Afuera. BAS: elevación sedimentaria en BA. Barra: 10 cm.

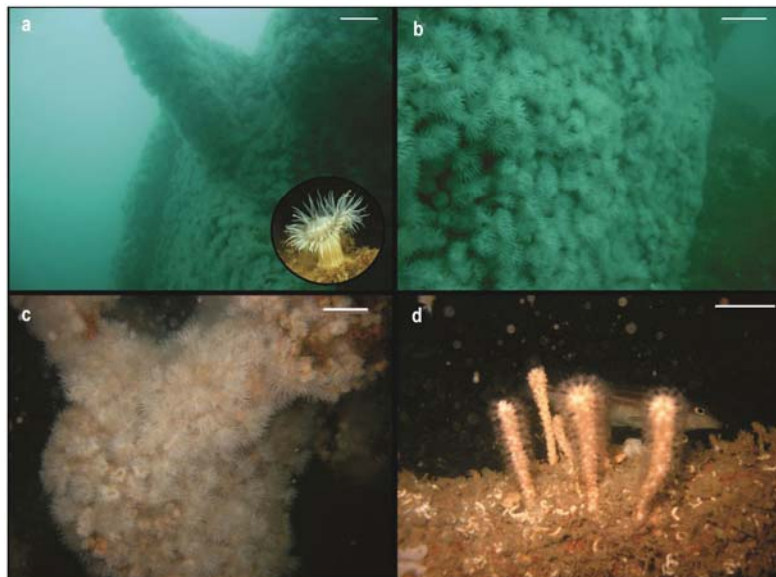


Figure 5. Typical species colonizing the artificial reefs (shipwrecks) in the study area. a-b) the sea anemone *Anthothoe chilensis* in James Clunies vertical substrata (with a closer look to the species), c) the sea anemones in Cristo Rey, d) the soft-coral *Tripalea clavaria* in Cristo Rey. Scale bar: 10 cm.

Figura 5. Especies típicas colonizando los arrecifes artificiales (pecios) en el área de estudio. a-b) la anémoma de mar *Anthothoe chilensis* en el sustrato vertical del James Clunies (con vista detallada de la especie), c) las anémomas de mar en el Cristo Rey, d) el coral blando *Tripalea clavaria* en el Cristo Rey. Barra: 10 cm.

ACKNOWLEDGEMENTS

We acknowledge CASE Diving Center for their help during field work and logistical support. This paper was funded by PICT 2007 02200 and 2008 01194; EXA 460/09, CEN 031/10. This is INIDEP contribution 1690

REFERENCES

- Acuña, F.H., A.C. Excoffon, M.O. Zamponi & G.N. Genzano. 2004. Feeding habits of the temperate octocoral *Tripalea clavaria* (Studer, 1878) (Octocorallia, Gorgonaria, Anthothelidae), from sublittoral outcrops off Mar del Plata, Argentina. Belg. J. Zool., 134(1): 65-66.
- Baine, M. 2001. Artificial reefs: a review of their design, application, management and performance. Ocean Coast. Manage., 44: 241-259.
- Bertolotti, M.I., G.A. Verazay, E. Errazti, A.N. Pagani & J. Buono. 2001. Flota pesquera argentina. Evolución durante el periodo 1960-1998, con una actualización al 2000. En: M.I. Bertolotti, G.A. Verazay & R. Akselman (eds.). El Mar argentino y sus recursos pesqueros. Evolución de la flota pesquera argentina, artes de pesca y dispositivos selectivos. Publicaciones especiales INIDEP, Mar del Plata, 3: 9-54.
- Bertolotti, M.I., E. Errazti, P. Gualdoni & A. Pagani. 2008. Principios de política y economía pesquera. Dunker, Buenos Aires, 240 pp.
- Bremec, C. & A. Roux. 1997. Resultados del análisis de una campaña de investigación pesquera, sobre comunidades bentónicas asociadas a bancos de mejillón (*Mytilus edulis platensis* D' Orb.) en costas de Buenos Aires, Argentina. Rev. Invest. Des. Pesq., 11: 153-166.
- Carr, M.H. & M.A. Hixon. 1997. Artificial reefs: the importance of comparisons with natural reefs. Fish., 22: 28-33.
- Clarke, K.R. & R.M. Warwick. 2001. Change in marine communities: an approach to statistical analysis and interpretation. PRIMER-E, Plymouth, 161 pp.
- Collie, J.S., S.J. Hall, M.J. Kaiser & I.R. Poiner. 2000. A quantitative analysis of fishing impacts on shelf-sea benthos. J. Anim. Ecol., 69: 785-798.
- Excoffon, A.E. & F.H. Acuña. 1998. Dinámica reproductiva y aspectos poblacionales de un clon de *Anthothoe chilensis* (Lesson, 1830) (Cnidaria, Anthozoa) del intermareal de Mar del Plata. Frente Marítimo, 17, Sec. A: 107-111.
- Excoffon, A.C., M.J.C. Belem, M.O. Zamponi & E. Schlenz. 1997. The validity of *Anthothoe chilensis* (Actiniaria, Sagartiidae) and its distribution in Southern Hemisphere. Iheringia, Sér. Zool., (82): 107-118.
- Excoffon, A.C., F.H. Acuña, M.O. Zamponi & G.N. Genzano. 2004. Reproduction of the temperate octocoral *Tripalea clavaria* (Octocorallia, Anthothelidae) from sublittoral outcrops off Mar del Plata, Argentina. J. Mar. Biol. Assoc., U.K., 84(4): 695-700.
- Falcão, M., M.N. Santos, T. Drago, D. Serpa & C. Monteiro. 2009. Effect of artificial reefs (southern Portugal) on sediment-water transport of nutrients: Importance of the hydrodynamic regime. Estuar. Coast. Shelf Sci., 83: 451-459.
- Francour, P. & A. Koukouras. 2000. Methods for studying the impact of diver frequentation and mooring on coralligenous communities. In: R. Goñi, M. Harmelin-Vivien, F. Badalamenti, L. Le Diréach & G. Bernard (eds.). Introductory guide to methods for selected ecological studies in marine reserves. GIS Posidonie Publications, Paris, pp. 69-74.
- Galván, D.E., L.A. Venerus & A.J. Irigoyen. 2009. The reef-fish fauna of the northern Patagonian gulfs, Argentina, southwestern Atlantic. Open Fish Sci. J., 2: 90-98.
- Genzano, G.N. 2010. La vida en el mar. Buceando el la costa de Mar del Plata. Instituto Nacional de Investigación y Desarrollo Pesquero, INIDEP, 1: 46 pp.
- Genzano, G.N., M.O. Zamponi, A.C. Excoffon & F.H. Acuña. 2002. Hydroid populations from sublittoral outcrops off Mar del Plata, Argentina: abundance, seasonality, and reproductive periodicity. Ophelia, 56(3): 61-70.
- Glasby, T.M. & S.D. Connell. 2001. Orientation and position of substrata have large effects on epibiotic assemblages. Mar. Ecol. Prog. Ser., 214: 127-135.
- Gratwicke, B. & M.R. Speight. 2005. The relationship between fish species richness, abundance and habitat complexity in a range of shallow tropical marine habitats. J. Fish Biol., 66: 650-667.
- Grossman, G.D., G.P. Johnes, & W.J. Seaman. 1997. Do artificial reefs increase regional fish production? A review of existing data. Fisheries, 22: 17-23.
- Hiddink, J.G., S. Jennings & M.J. Kaiser. 2006a. Indicators of the ecological impact of bottom-trawl disturbance on seabed communities. Ecosystems, 9(7): 1190-1199.
- Hiddink, J.G., T. Hutton & S. Jennings. 2006b. Predicting the effects of area closures and fishing effort restrictions on the production, biomass, and species richness of benthic invertebrate communities. ICES J. Mar. Sci., 63(5): 822-830.

- Iñurieta, V. 2005. Los buzos del Puerto de Mar del Plata. Editorial Martin, Mar del Plata, 414 pp.
- Irigoyen, A.J. & L.A. Venerus. 2008. The 'pole-hooking' method: a novel and economical technique for *in situ* tagging small to medium-sized fishes. *Fish. Res.*, 91: 349-353.
- Kaiser, M.J., F.E. Spence & P.J.B. Hart. 2000. Fishing-gear restrictions and conservation of benthic habitat complexity. *Conserv. Biol.*, 14: 1512-1525.
- Lanfredi, N.W., J.L. Pousa, C.A. Mazio & W.C. Dragani. 1992. Wave-power potential along the coast of the province of Buenos Aires. *Energy*, 17(11): 997-1006.
- Lessios, H.A. 1996. Methods for quantifying abundance of marine organisms. In: M.A. Lang & C.C. Baldwin (eds.). *Methods and techniques of underwater research. Proceedings of the American Academy of Underwater Sciences Scientific Diving Symposium.* Washington D.C., pp. 149-157.
- Loya, Y. 1978. Plotless and transect methods. In: D.R. Stoddart & R.E. Johannes (eds.). *Coral reefs: Research methods.* UNESCO, Paris, pp. 197-217.
- Luckhurst, B.E. & K. Luckhurst. 1978. Analysis of the influence of the substrate variables on coral reef fish communities. *Mar. Biol.*, 49: 317-323.
- Moura, A., D. Boaventura, J. Cúrdia, M.N. Santos & C.C. Monteiro. 2006. Biomass production of early macrobenthic communities at the Faro/Ancão artificial reef (Portugal): effect of depth and reef layer. *Bull. Mar. Sci.*, 78: 83-92.
- Olivier, S.R., A. Escofet, J.M. Orensanz, S.E. Pezzani, A.M. Turro & M.E. Turro. 1966. Contribución al conocimiento de las comunidades bénticas de Mar del Plata. I. El litoral rocoso entre Playa Grande y Playa Chica. *Anales de la Comisión de Investigaciones Científicas de la Provincia de Buenos Aires*, 7: 185-206.
- Olivier, S.R., R. Bastida & M.R. Torti. 1968. Resultados de las campañas oceanográficas Mar del Plata I-V. Contribución al trazado de una carta bionómica del área de Mar del Plata. Las asociaciones del sistema litoral entre 12 y 70 m de profundidad. *Bol. Inst. Biol. Mar, Mar del Plata*, 16: 1-85.
- Pattengill-Semmens, C.V. 2001. Learning to see underwater. *Underwater Naturalist*, 25(4): 37-40.
- Penchaszadeh, P. 1973. Ecología de la comunidad del mejillón (*Brachidontes rodriguezii*, D'Orb.) en el mediolitoral rocoso de Mar del Plata (Argentina): el proceso de recolonización. *Physis A*, 32(84): 51-64.
- Perkol-Finkel, S. & Y. Benayahu. 2005. Recruitment of benthic organisms onto a planned artificial reef: shifts in community structure one decade post-deployment. *Mar. Environ. Res.*, 59: 79-99.
- Perkol-Finkel, S. & Y. Benayahu. 2007. Differential recruitment of benthic communities on neighboring artificial and natural reefs. *J. Exp. Mar. Biol. Ecol.*, 340: 25-39.
- Perkol-Finkel, S., T. Miloh, G. Zilman, S.I. Benayahu & Y. Benayahu. 2006. Floating and fixed artificial reefs: the effect of substratum motion on benthic communities. *Mar. Ecol. Prog. Ser.*, 317: 9-20.
- Ruitton, S., P. Francour & C.F. Boudouresque. 2000. Relationships between algae, benthic herbivorous invertebrates, and fishes in rocky sublittoral communities of a temperate sea (Mediterranean). *Estuar. Coast. Shelf Sci.*, 50: 217-230.
- Seaman, W.J.E. 2000. Artificial reef evaluation: with application to natural marine habitats. *CRC Marine Science Series*, CRC Press, Boca Raton, 246 pp.
- Scelzo, M.A., R. Elías, E.A. Vallarino, M. Charrier, N. Lucero & F. Alvarez. 1996. Variación estacional de la estructura comunitaria del bivalvo intermareal *Brachidontes rodriguezii* (D'Orbigny, 1846) en sustratos artificiales, Mar del Plata. *Neritica*, 10: 87-102.
- Svane, I.B. & J.K. Petersen. 2001. On the problems of epibiosis, fouling and artificial reefs, a review. *Mar. Ecol.*, 22: 169-188.
- Thanner, S.E., T.L. McIntosh & S.M. Blair. 2006. Development of benthic and fish assemblages on artificial reef materials compared to adjacent natural reef assemblages in Miami-Dade County, Florida. *Bull. Mar. Sci.*, 78: 57-70.
- Woodman, G. 1999. Preliminary analysis of the Hoi Ha Wan mapping programme. [http://www.lpcuwc.edu.hk/en/qc/qc_coral.php]. Revised: 15 August 2010.
- Zintzen, V., A. Norro, C. Massin & J. Mallefet. 2008. Spatial variability of epifaunal communities from artificial habitat: Shipwrecks in the southern bight of the north sea. *Estuar. Coast. Shelf Sci.*, 76: 327-344.

Received: 22 December 2010; Accepted: 11 October 2011